



# LED TRADITIONAL WALLPACK

► **DESIGN** - LED TRADITIONAL WALLPACK has a die-cast aluminum housing with excellent heat dissipation, tempered glass lens to protect the LED chips and provide high illuminance, and anti-leakage silicone gaskets. It is equipped with a removable hinge door for quick and easy installation and wiring. It is designed to operate on 120-277 circuits with a 0-10V dimmable driver.

► **COLOR SELECTABLE** - You can choose either a 3,000K warm white, 4,000K cool white or 5,000K daylight color temperature.

► **BATTERY BACK-UP** - The built-in battery back-up provide 90 minutes of power in case of emergency.

► Surge protection 6kV protects the fixture from voltage spikes and current surges.

► **INSTALLATION** - The fixture can be mounted to a junction box or directly to a wall. Perfect commercial or industrial solution for outdoor security lighting, wall perimeter lighting, garages, large backyards, warehouses, hotels, and many other applications. It is also Wet Locations rated.

► **ADVANTAGES** - With calculated lifespan up to 145,000 hours, these fixtures are made to last decades under normal operation! ASD provides a 5-year limited warranty along with UL and DLC Premium certifications to guarantee top quality products and safety!

Catalog number	
Notes	
Type	



Model	Watts	Voltage	Dimmable	Lumens	CCT	Finish	Dimensions (LxWxH)	Option
ASD-WLP01S-50D50	50W	120-277 V	1-10 V	7,100 lm	5,000 K	Bronze	10-1/4" x 9-1/2" x 7-1/2"	-
ASD-WLP01-50D50	50W	120-277 V	0-10 V	7,600 lm	5,000 K	Bronze	14-1/4" x 9-5/16" x 7-9/16"	-
ASD-WLP01-80D50	80W	120-277 V	0-10 V	11,280 lm	5,000 K	Bronze	14-1/4" x 9-5/16" x 7-9/16"	-
ASD-WLP01-120D50	120W	120-277 V	0-10 V	16,920 lm	5,000 K	Bronze	14-1/4" x 9-5/16" x 7-9/16"	-
<b>WLP01 COLOR SELECTABLE</b>								
ASD-WLP01S-30DAC	30W	120-277 V	1-10 V	4,500/4,890/4,834 lm	3CCT (3,000/4,000/5,000 K)	Bronze	10-1/4" x 9-1/2" x 7-1/2"	-
ASD-WLP01S-50DAC	50W	120-277 V	1-10 V	7,500/7,230/7,282 lm	3CCT (3,000/4,000/5,000 K)	Bronze	10-1/4" x 9-1/2" x 7-1/2"	-
ASD-WLP01-50DAC	50W	120-277 V	1-10 V	7,250/7,719/7,773 lm	3CCT (3,000/4,000/5,000 K)	Bronze	14-1/4" x 9-5/16" x 7-9/16"	-
ASD-WLP01-80DAC	80W	120-277 V	1-10 V	11,680/12,174/11,956 lm	3CCT (3,000/4,000/5,000 K)	Bronze	14-1/4" x 9-5/16" x 7-9/16"	-
ASD-WLP01-120DAC	120W	120-277 V	1-10 V	17,050/17,703/17,633 lm	3CCT (3,000/4,000/5,000 K)	Bronze	14-1/4" x 9-5/16" x 7-9/16"	-
<b>WLP01-EM WITH BATTERY BACK-UP</b>								
ASD-WLP01-50DAC-EM	50W	120-277 V	1-10 V	7,250/7,719/7,773 lm	3CCT (3,000/4,000/5,000 K)	Bronze	14-1/4" x 9-5/16" x 7-9/16"	8W Battery back-up
ASD-WLP01-80DAC-EM	80W	120-277 V	1-10 V	11,680/12,174/11,956 lm	3CCT (3,000/4,000/5,000 K)	Bronze	14-1/4" x 9-5/16" x 7-9/16"	15W Battery back-up

## PRODUCT SPECIFICATIONS:

Construction & Materials						
Housing	Die-cast aluminum					
Lens	Tempered glass					
Finish	Bronze					
Weight	ASD-WLP01S-50D50	5.3 lbs (2.4 kg)	ASD-WLP01S-30DAC	5.3 lbs (2.4 kg)	ASD-WLP01-120DAC	9.4 lbs (4.3 kg)
	ASD-WLP01-50D50	7.9 lbs (3.6 kg)	ASD-WLP01S-50DAC	5.5 lbs (2.5 kg)	ASD-WLP01-50DAC-EM	9.1 lbs (4.2 kg)
	ASD-WLP01-80D50	8.2 lbs (3.7 kg)	ASD-WLP01-50DAC	8 lbs (3.7 kg)	ASD-WLP01-80DAC-EM	9.4 lbs (4.3 kg)
	ASD-WLP01-120D50	9.3 lbs (4.2 kg)	ASD-WLP01-80DAC	8.3 lbs (3.8 kg)		
Environmental system						
Work environment	Suitable for Wet Locations, IP65					
Operating temperature	-40°F to 122°F (-40°C to 50°C)					
L-70 Life	R > 72,000 hrs; C > 145,000 hrs					

For most up-to-date spec sheets please refer to [asd-lighting.com](http://asd-lighting.com)

ASD LIGHTING CORP

E-mail: [orders@asd-lighting.com](mailto:orders@asd-lighting.com) | Web site: [www.asd-lighting.com](http://www.asd-lighting.com)





# LED TRADITIONAL WALLPACK

Optical system						
Luminous flux	ASD-WLP01S-50D50	7,100 lm	ASD-WLP01S-30DAC	4,500/4,890/4,834 lm	ASD-WLP01-120DAC	17,050/17,703/17,633 lm
	ASD-WLP01-50D50	7,600 lm	ASD-WLP01S-50DAC	7,500/7,230/7,282 lm	ASD-WLP01-50DAC-EM	7,250/7,719/7,773 lm
	ASD-WLP01-80D50	11,280 lm	ASD-WLP01-50DAC	7,250/7,719/7,773 lm	ASD-WLP01-80DAC-EM	11,680/12,174/11,956 lm
	ASD-WLP01-120D50	16,920 lm	ASD-WLP01-80DAC	11,680/12,174/11,956 lm		
Color temperature	5,000 K					
CRI	3CCT switch (3,000/4,000/5,000 K), 5,000 K by default					
	> 70					
Electrical system						
Input voltage	120-277 V					
Max input current	ASD-WLP01S-50D50	0.55 A	ASD-WLP01S-30DAC	0.33 A	ASD-WLP01-120DAC	1.2 A
	ASD-WLP01-50D50		ASD-WLP01S-50DAC	0.55 A	ASD-WLP01-50DAC-EM	0.55 A
	ASD-WLP01-80D50	0.8 A	ASD-WLP01-50DAC			ASD-WLP01-80DAC-EM
	ASD-WLP01-120D50	1.05 A	ASD-WLP01-80DAC	0.8 A		
Inrush current (Action time)	80 A (0.75 S)					
Off state power	0W					
Power consumption	ASD-WLP01S-50D50	50W	ASD-WLP01S-30DAC	30W	ASD-WLP01-120DAC	120W
	ASD-WLP01-50D50		ASD-WLP01S-50DAC	50W	ASD-WLP01-50DAC-EM	50W
	ASD-WLP01-80D50	80W	ASD-WLP01-50DAC			ASD-WLP01-80DAC-EM
	ASD-WLP01-120D50	120W	ASD-WLP01-80DAC	80W		
Power factor	> 0.9					
Output voltage	ASD-WLP01S-50D50	110-130 V	ASD-WLP01S-30DAC	110-130 V	ASD-WLP01-120DAC	110-130 V
	ASD-WLP01-50D50	130 V	ASD-WLP01S-50DAC		ASD-WLP01-50DAC-EM	105-125 V
	ASD-WLP01-80D50		ASD-WLP01-50DAC		ASD-WLP01-80DAC-EM	110-130 V
	ASD-WLP01-120D50		ASD-WLP01-80DAC			
Max output current	ASD-WLP01S-50D50	0.39 A	ASD-WLP01S-30DAC	0.23 A	ASD-WLP01-120DAC	0.92 A
	ASD-WLP01-50D50		ASD-WLP01S-50DAC	0.39 A	ASD-WLP01-50DAC-EM	0.39 A
	ASD-WLP01-80D50	0.62 A	ASD-WLP01-50DAC			ASD-WLP01-80DAC-EM
	ASD-WLP01-120D50	0.92 A	ASD-WLP01-80DAC	0.62 A		
Surge protection	4 kV					

Dimming compatible controls					
Brand	Maxxima	Keygma	Lutron	Leviton	Eaton
Models	MEW-DM600LV	KGM-1A010V	DVSTV-WH	IP710-DLZ	DF10P-C1
Regular and voluntary certifications					
5-year limited warranty					
DesignLights Consortium (DLC) listed (Classification: Premium)					
Main: Outdoor luminaires; General application: Mid/High output;					
Primary use: Outdoor non-cutoff and semi-cutoff wall-mounted area luminaires					
UL certified E473804					

## PACKAGE CONTENTS:

Description	Q-ty
LED Traditional Wallpack	1
Box	1

## PHOTOCELL INFORMATION

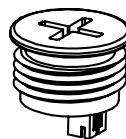


The dusk-to-dawn photocell automatically turns the fixture off during daylight hours.

- The light is always ON when luminance is < 30 lux (2.8 fc) (night time)
- The light is always OFF when luminance is > 60 lux (5.6 fc) (day time)

## ACCESSORIES (sold separately):

**Photocell**  
ASD-PC-WLP



## ACCESSORY COMPATIBILITY LIST:

Models	Accessories	Photocell ASD-PC-WLP
ASD-WLP01S-50D50		•
ASD-WLP01-50D50		•
ASD-WLP01-80D50		•
ASD-WLP01-120D50		•
ASD-WLP01S-30DAC		•
ASD-WLP01S-50DAC		•
ASD-WLP01-50DAC		•
ASD-WLP01-80DAC		•
ASD-WLP01-120DAC		•
ASD-WLP01-50DAC-EM		•
ASD-WLP01-80DAC-EM		•

For most up-to-date spec sheets please refer to [asd-lighting.com](http://asd-lighting.com)





# LED TRADITIONAL WALLPACK

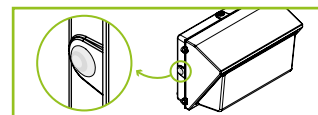
## BUILT-IN BATTERY BACK-UP INFORMATION

Specifications	Model: BLD-CM20H-1500400
Input voltage	100-277 V 50/60 Hz
Warranty	5 years
Indicator light	Illuminated test switch, indicator light
Battery type	Li-ion
Battery charging current	250 mA
Charging time	≥ 24 hours

Model	Battery capacity	Max emergency output power	EM lumens	Emergency current	Emergency operation time	Battery voltage	Full charge/discharge cycles
ASD-WLP01-50DAC-EM	2,500mA * 4	8W	1,246 lm	70 mA	≥ 90 minutes	7.4 V	500 cycles
ASD-WLP01-80DAC-EM	3,000mA * 6	15W	2,301 lm	125 mA	≥ 90 minutes	11.1 V	500 cycles

## STANDARD OPERATION DISPLAY STATUS:

Charging	
Emergency mode	



### Indicator light modes:

- Green light ON – the battery back-up is charging in standby mode;
- Green light OFF – AC power is out, the battery back-up is working in emergency mode.

**Test button operation:** Press the test button to switch the system to back-up mode. The green light will turn off, and the fixture will decrease in light amount. Release test button to go back to the normal mode

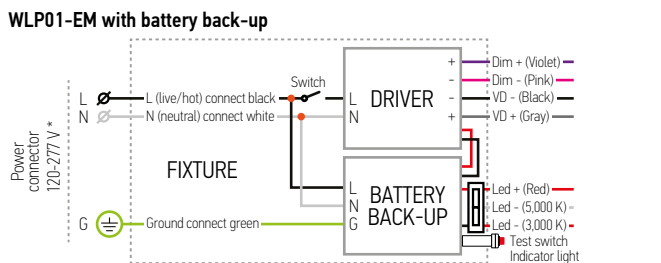
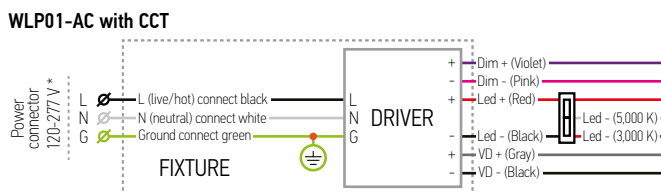
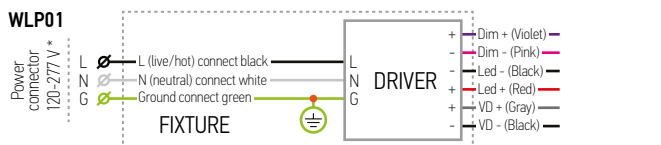
## INSTALLATION GUIDE

### IMPORTANT SAFETY INFORMATION:

Please read all the instructions below before installation.

- ▶ Make sure that the supply voltage corresponds to the rated product voltage.
- ▶ The product must be installed by a qualified electrician in accordance with the National Electrical Code and corresponding local codes.
- ▶ If the product is damaged, do not use it.

### ELECTRICAL SCHEMATIC DIAGRAM:



### ⚠ WARNING

**RISK OF PERSONAL INJURY – READ and follow all WARNINGS and installation instructions.** Keep or give to the owner for future reference.

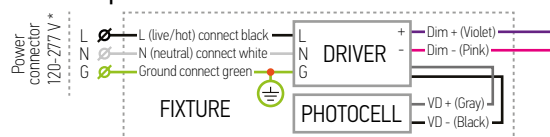
**Risk of cuts:** Wear gloves to prevent cuts or abrasions when removing from carton, handling, installing, and maintaining this product.

**Risk of electric shock:** This product must be installed in accordance with the applicable installation code by a person familiar with the construction and operation of the product and the hazards involved.

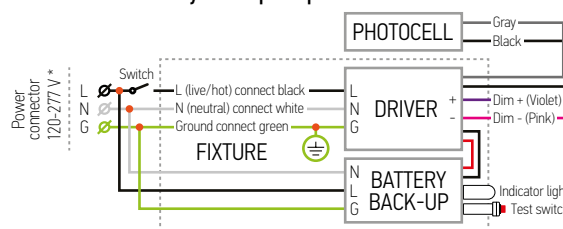
**Risk of Fire:** Minimum 194°F supply conductors. Consult a qualified electrician to ensure correct branch circuit conductor.

ASD® assumes no responsibility for claims arising out of improper or careless Installation or handling of this product.

### WLP01 with photocell



### WLP01-EM with battery back-up and photocell



\* The regular voltage 120-277 V fixtures can be alternatively powered without neutral by two-phase circuit with phase-to-phase voltage of 208 V (L1-120 V & L2-120 V).

**WARNING:** Phase-to-phase voltage should be less than 277 V (160 V per each phase) and more than 120 V (70 V per each phase)! Do not confuse Regular Voltage fixtures of 120-277 V with High Voltage ones of 277-480 V!

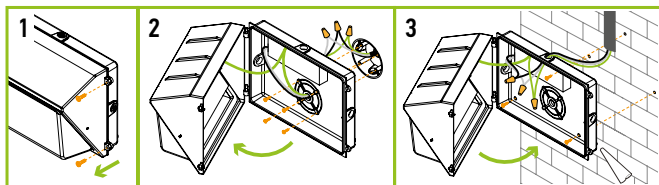
For most up-to-date spec sheets please refer to [asd-lighting.com](http://asd-lighting.com)



# LED TRADITIONAL WALLPACK

## INSTALLATION STEPS:

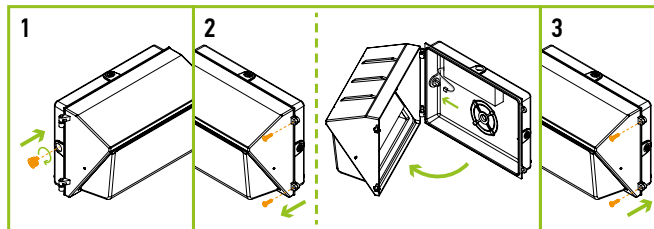
1. Use a screwdriver to loosen the screws securing the front cover and open the fixture.
2. **Junction box installation:** Drill the mounting holes and secure the fixture on the mounting surface, insert the power cord. Connect the wires: Black to Black, White to White, Green to Green. Close the front cover and tighten the screws.
3. **Wall installation:** Secure the fixture on the wall and remove one of the side caps, insert the power cord. Connect the wires: Black to Black, White to White, Green to Green. Close the front cover and tighten the screws. For outdoor locations it is recommended to use silicone (not included).



## PHOTOCELL INSTALLATION ASD-PC-WLP

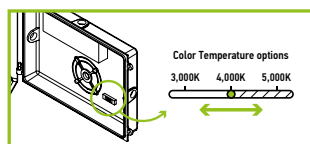
### sold separately:

1. Screw off knockout on the side of the fixture. Screw in the Photocell to the knockout hole.
2. Unscrew two screws on the side of the fixture, open the fixture, insert connector on black-grey wire to the photocell.
3. Close the fixture and tighten two screws back.



## COLOR TEMPERATURE SETTINGS FOR 3 CCT MODELS:

Choose needed color temperature by adjusting the switch.



## ORDERING INFORMATION

Model	Pcs. per carton	Carton size	Carton weight	UPC
ASD-WLP01S-50D50	1	11.7" x 12.3" x 9.5"	6.8 lbs	810050736220
ASD-WLP01-50D50	1	16.5" x 10.8" x 9.4"	9.9 lbs	810050735742
ASD-WLP01-80D50	1	16.5" x 10.8" x 9.4"	10.1 lbs	810050735759
ASD-WLP01-120D50	1	16.5" x 10.8" x 9.4"	11.2 lbs	810050735766
<b>WLP01 COLOR SELECTABLE</b>				
ASD-WLP01S-30DAC	1	11.7" x 12.3" x 9.5"	6.8 lbs	810050735803
ASD-WLP01S-50DAC	1	11.7" x 12.3" x 9.5"	7.1 lbs	810050736985
ASD-WLP01-50DAC	1	16.5" x 10.8" x 9.4"	10 lbs	810050735810
ASD-WLP01-80DAC	1	16.5" x 10.8" x 9.4"	10.3 lbs	810050735827
ASD-WLP01-120DAC	1	16.5" x 10.8" x 9.4"	11.4 lbs	810050735834
<b>WLP01-EM WITH BATTERY BACK-UP</b>				
ASD-WLP01-50DAC-EM	1	16.5" x 10.8" x 9.4"	11.1 lbs	810050735780
ASD-WLP01-80DAC-EM	1	16.5" x 10.8" x 9.4"	11.4 lbs	810050735797

## ACCESSORIES:

Model	Description	UPC	Pcs. per carton	Carton size	Carton weight	GTIN 14
ASD-PC-WLP	Photocell	810050735773	100	5.1" x 4.1" x 10.2"	1.1 lbs	30810050735774

For most up-to-date spec sheets please refer to [asd-lighting.com](http://asd-lighting.com)

ASD LIGHTING CORP

E-mail: [orders@asd-lighting.com](mailto:orders@asd-lighting.com) | Web site: [www.asd-lighting.com](http://www.asd-lighting.com)

